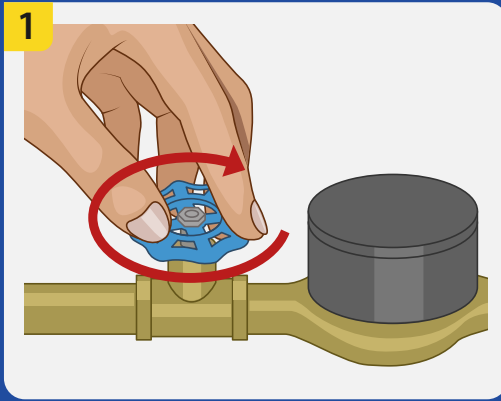
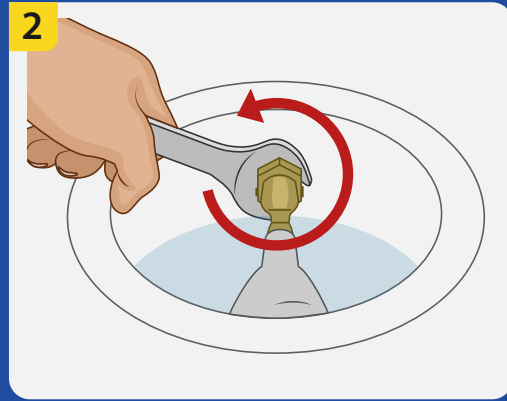


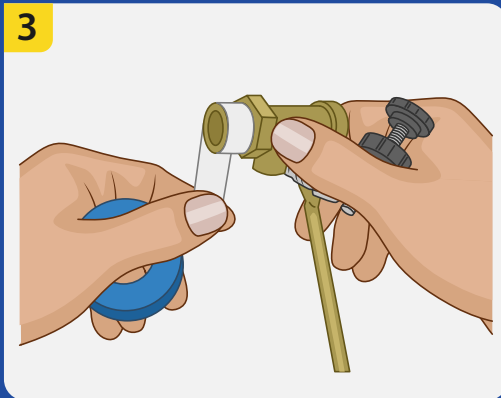
Installation



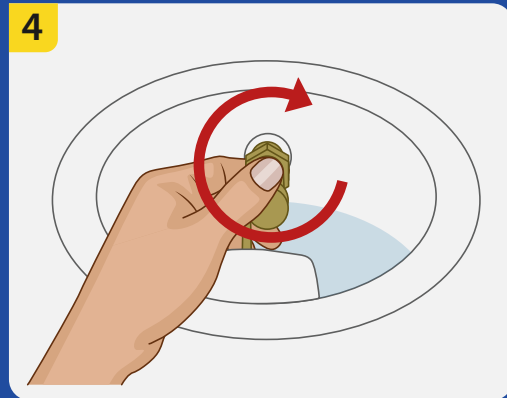
1 Turn off water supply



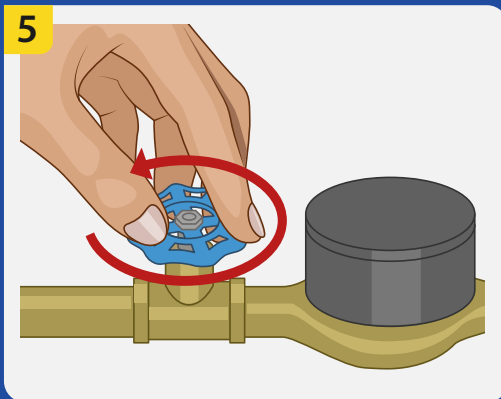
2 Remove old float valve



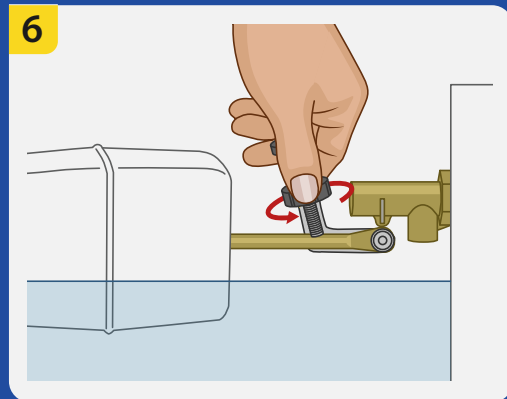
3 Apply teflon tape (not included) to new float valve.



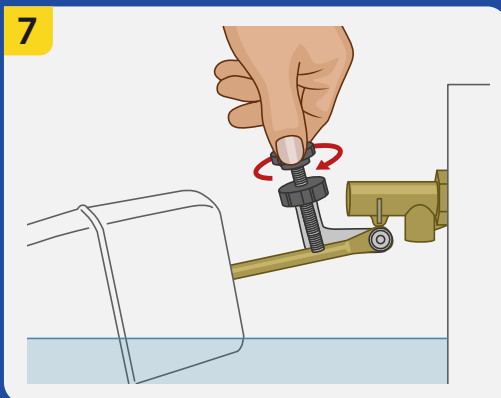
4 Install float valve, hand tighten so not over tighten.



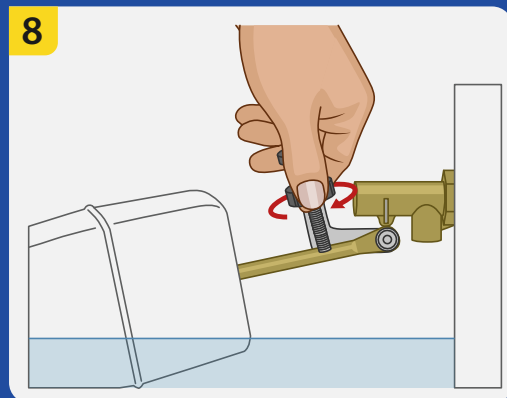
5 Turn on water supply.



6 Loosen locking nut.



7 Set water level with adjustment knob. Counter clockwise to **RAISE** the water and clockwise to **LOWER** the water.



8 Tighten locking nut.

Note:

Valve may drip until pressure on float equals incoming pressure. If drippings continue try lowering incoming pressure by turning incoming water down.

For more installation and adjustments videos go to www.floatvalvetec.com